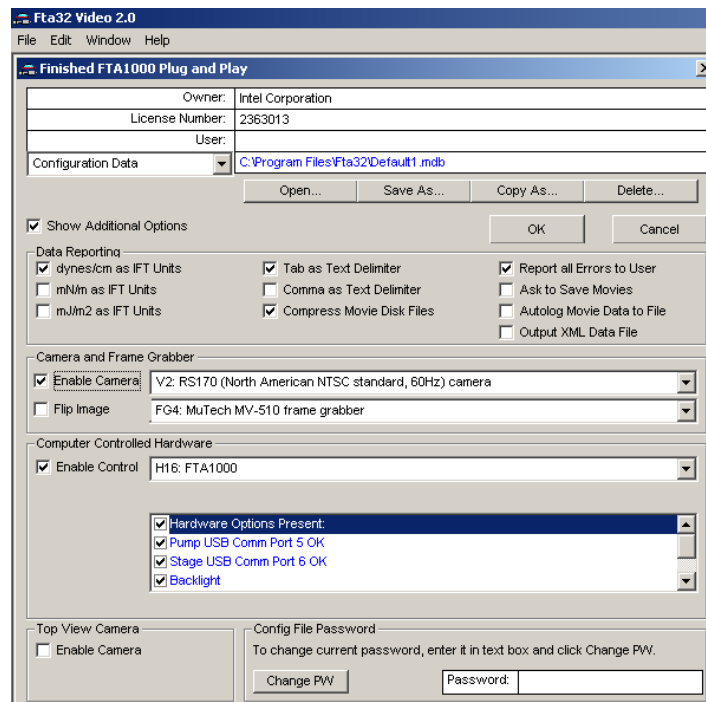


LogOn and Password Screens

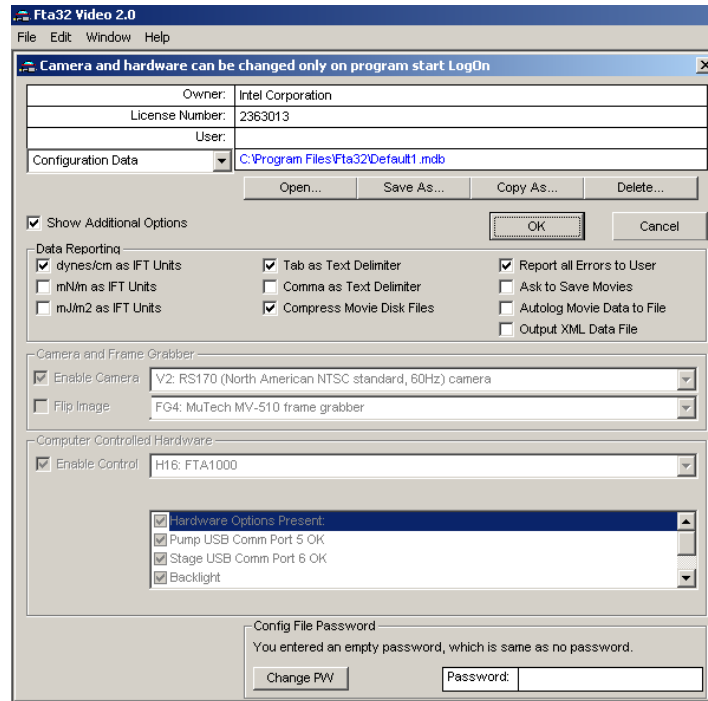
2 January 2008

The following screen shots show the initial startup logon with and without a password present.

No Password

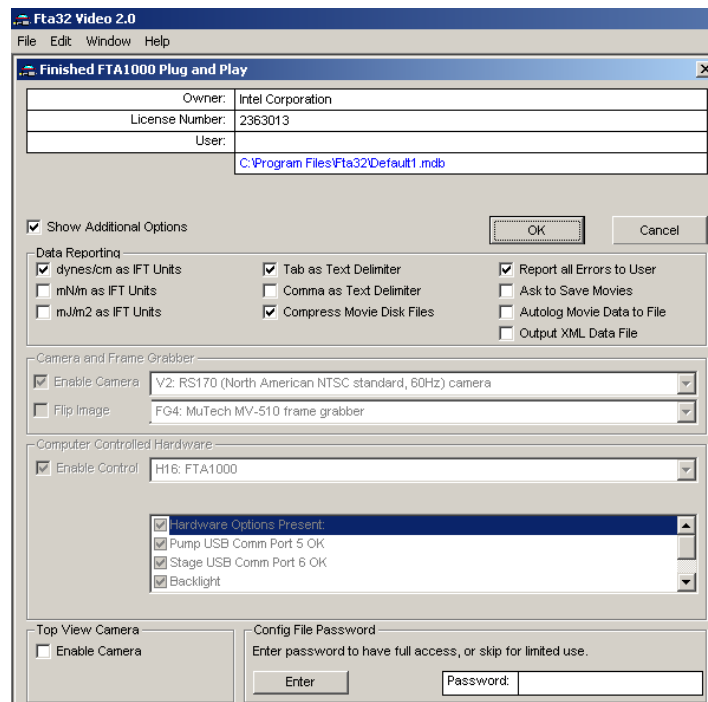


Initial LogOn screen, no password. The “Top View Camera” frame is present only with FTA1000 configurations – your setup may not have it.

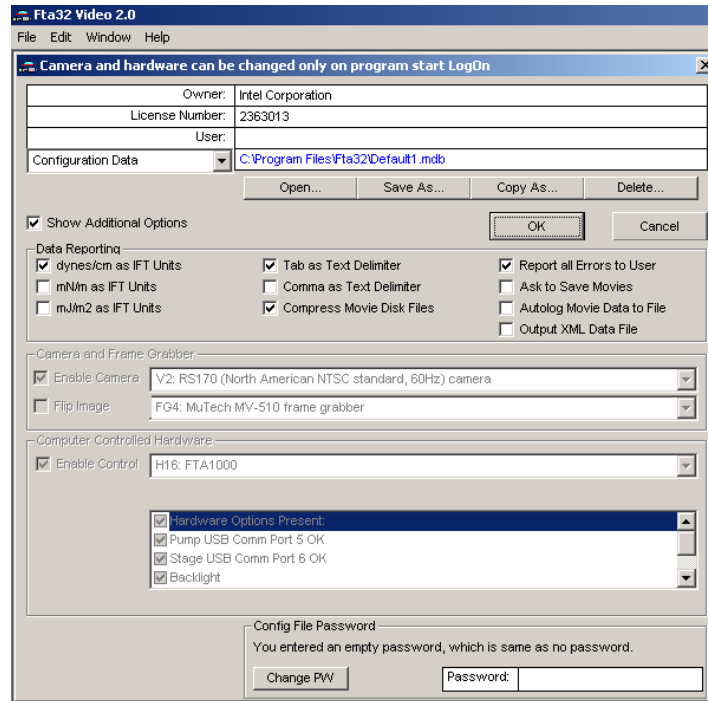


Coming back to initial LogOn screen after clicking OK by using File | LogOn.
Hardware configuration settings are no longer changeable – they are grayed out.

With a Password



Initial LogOn screen when there is a password set (password not yet entered for this session). Note this is similar to the previous screen, except that the ability to change config filename has been removed, in the upper portion of the screen.



Coming back to initial LogOn screen after clicking OK by using File | LogOn.
 Hardware configuration settings are no longer changeable – they are grayed out.
 Same as screen when there is no password.

Removal of Password

If you remember the password, you can enter a new password when the Change PW button is available on the LogOn screen. If you enter a blank (no characters), then the system assumes you want no password at all. You can start a new password later if you wish to.

If you have forgotten your password, the only remedy is to remove the existing config file (delete it) when the Fta32 program is not open. The program will create a new config file with the same name. It will not have a password, but it will also not have your old settings. These must be recreated. In particular, remember magnification calibration.

File: Passwords.doc